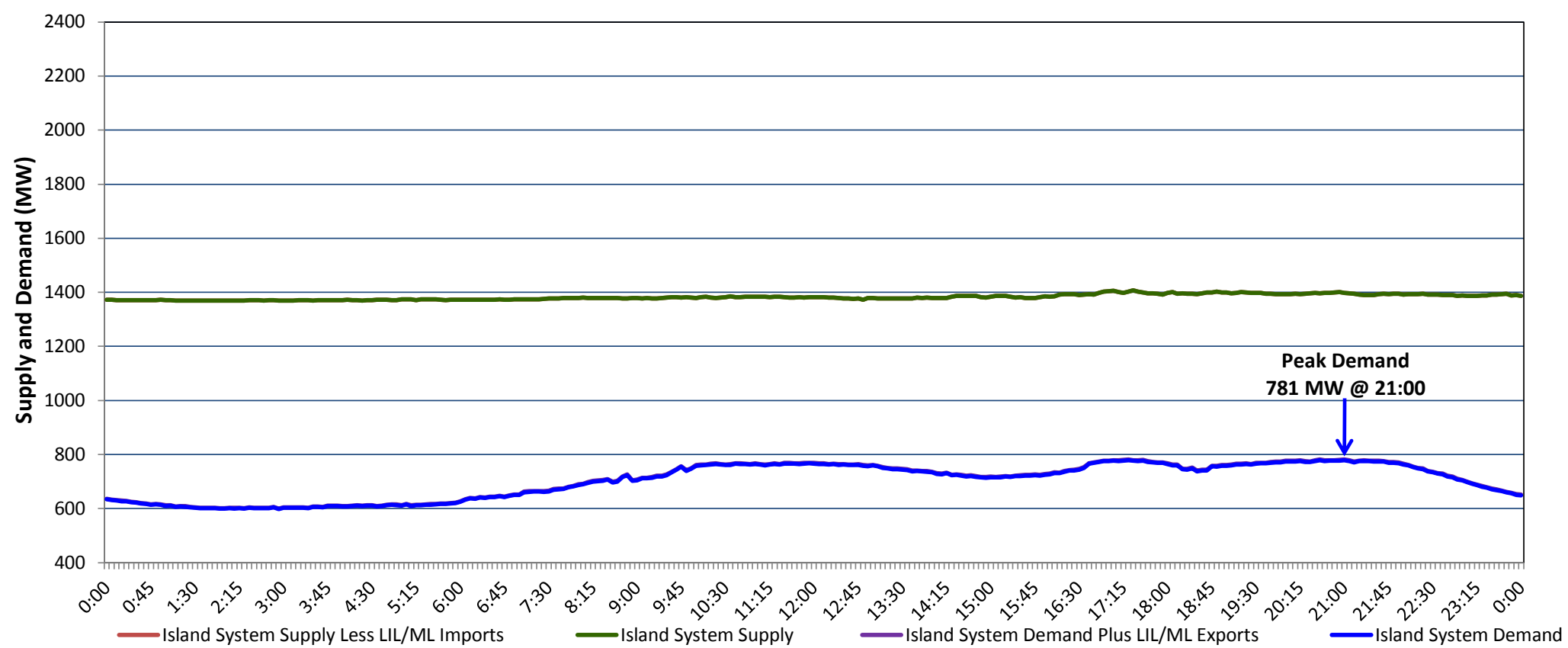


**Newfoundland Labrador Hydro (NLH)
Supply and Demand Status Report Filed Monday, June 14, 2021**

**Section 1
Island Interconnected System Supply, Demand & Exports
Actual 24 Hour System Performance For Sunday, June 13, 2021**



Supply Notes For June 13, 2021

1,2

- A As of 0805 hours, April 09, 2021, Holyrood Unit 3 unavailable due to planned outage (150 MW).
 B As of 0804 hours, May 26, 2021, Holyrood Unit 1 unavailable due to planned outage (170 MW).
 C As of 1616 hours, June 01, 2021, Bay d'Espoir Unit 3 unavailable due to planned outage (76.5 MW).
 D As of 0613 hours, June 11, 2021, Bay d'Espoir Unit 4 unavailable due to planned outage (76.5 MW).
 E As of 1208 hours, June 11, 2021, Holyrood Unit 2 available but not operating (170 MW).

**Section 2
Island Interconnected Supply and Demand**

Mon, Jun 14, 2021	Island System Outlook ³			Seven-Day Forecast	Temperature (°C)		Island System Daily Peak Demand (MW)	
					Morning	Evening	Forecast	Adjusted ⁷
Available Island System Supply: ⁵	1,370	MW		Monday, June 14, 2021	9	9	830	830
NLH Island Generation: ⁴	1,050	MW		Tuesday, June 15, 2021	10	8	795	795
NLH Island Power Purchases: ⁶	95	MW		Wednesday, June 16, 2021	9	16	860	860
Other Island Generation:	225	MW		Thursday, June 17, 2021	17	14	750	750
ML/LIL Imports:	-	MW		Friday, June 18, 2021	14	15	755	755
Current St. John's Temperature & Windchill:	8 °C	N/A	°C	Saturday, June 19, 2021	12	14	725	725
7-Day Island Peak Demand Forecast:	860	MW		Sunday, June 20, 2021	10	14	765	765

Supply Notes For June 14, 2021

3

- Notes:
1. Generation outages for running and corrective maintenance are included. These are not unusual for power system operations. They generally do not impact customer supply. The power system operators schedule outages to system equipment whenever possible to coincide with periods when customer demands are low and sufficient supply reserves are available. However, from time to time equipment outages are necessary and reserves may be impacted.
 2. Due to the Island system having no synchronous connections to the larger North American grid, when there is a sudden loss of large generating units there may be a requirement for some customer's load to be interrupted for short periods to bring generation output equal to customer demand. This automatic action of power system protection, referred to as under frequency load shedding (UFLS), is necessary to ensure the integrity and reliability of system equipment. Under frequency events have typically occurred 5 to 8 times per year on the Island Interconnected System and the resultant customer load interruptions are generally less than 30 minutes. With the activation of the Maritime Link frequency controller during the winter of 2018, UFLS events have occurred less frequently.
 3. As of 0800 Hours.
 4. Gross output including station service at Holyrood (24.5 MW) and improved NLH hydraulic output due to water levels (35 MW).
 5. Gross output from all Island sources (including Note 4).
 6. NLH Island Power Purchases include: CBPP Co-Gen, Nalcor Exploits, Rattle Brook, Star Lake, Wind Generation and capacity assistance (when applicable).
 7. Adjusted for curtailable load, market activities and the impact of voltage reduction when applicable.

**Section 3
Island Peak Demand Information
Previous Day Actual Peak and Current Day Forecast Peak**

Sun, Jun 13, 2021	Actual Island Peak Demand ⁸	21:00	781 MW
Mon, Jun 14, 2021	Forecast Island Peak Demand		830 MW

- Notes: 8. Island Demand / LIL / ML Exports (where applicable) is supplied by NLH generation and purchases, plus generation owned and operated by Newfoundland Power and Corner Brook Pulp & Paper (Deer Lake Power, DLP).